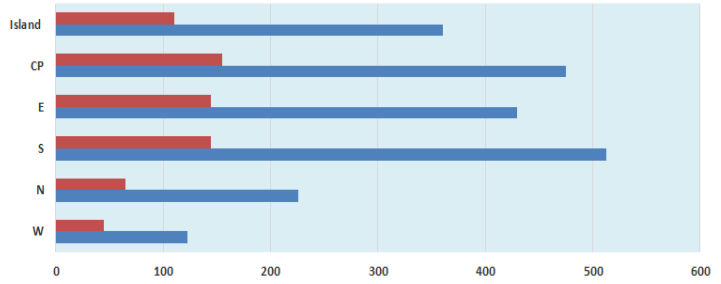


Mauritius Meteorological Services

Mean Rainfall for 1-15 April 2022

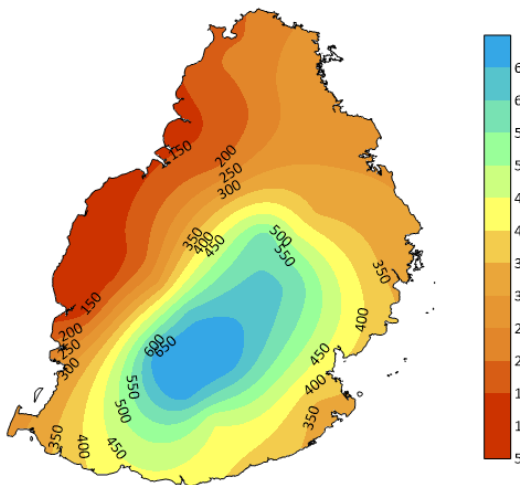
Mauritius

The first fortnight of April 2022 was very wet with 360 mm of rainfall, representing 324 % of the long-term mean. Rainfall was in excess over the whole island and locally in the region of Mon Bois, Arnaud and Union Park, it was in excess by 440-495 mm.

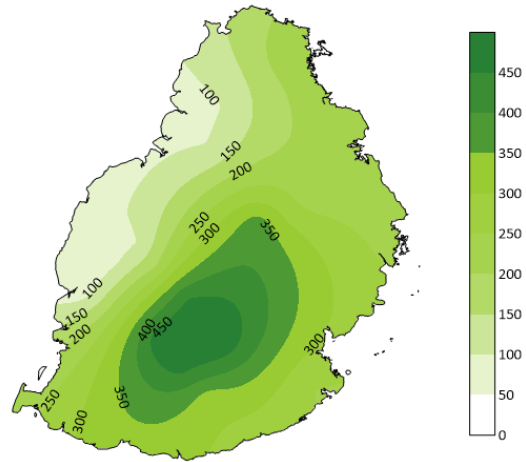


	W	N	S	E	CP	Island
■ First Half LTM (1991-2020) for April Rainfall (mm)	45	65	145	145	154	111
■ Actual Mean rainfall for 1st half April 2022 (mm)	123	226	513	430	475	360

Observed Rainfall (mm)



Rainfall Anomaly (mm)



Outer Islands

		Amount (mm)		
Stations		Actual Rainfall	LTM Rainfall	% of LTM
Rodrigues	Pointe Canon	33	74	45
	Plaine Corail	27	65	41
	Citronelle	55	107	51
Agalega		139	78	178
St Brandon		90	67	134

Dry conditions prevailed over Rodrigues.
 St. Brandon recorded well above normal rainfall.
 Very wet conditions prevailed over Agalega

Ram Dhurmea

For Director

19 April 2021